



## WONDERFLY

Folli Follie presents their autumn/winter 'Wonderfly' collection. For a second consecutive season, inspiration has been drawn from an abstract butterfly visual and then allowed to create its own impression on clean cut stylish creations and dressed in the most fashionable seasonal colors. Visit the new Regent Street store to discover the collection yourself.

124 Regent Street, W1  
020 7287 9912



# TRAVEL & STYLE

Where to go and what to buy with *Chris Johnson*



## BEST FOOT FORWARD

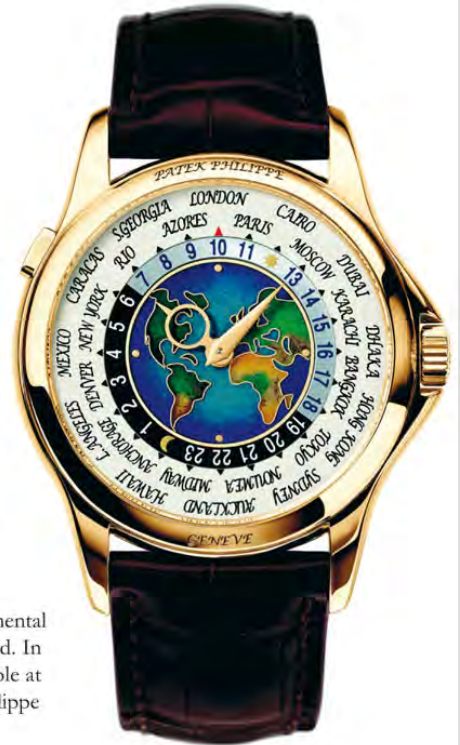
The brogue is a fashionable foot's best friend. Now, this perennially stylish shoe has been given a makeover by leather footwear specialists Oliver Sweeney, their autumn/winter range introducing bold new styles alongside idiosyncratic twists on old classics. Shoe connoisseurs can this season look forward to the launch of the 'Black Star' capsule range. Inspired by all things rock and roll and with the pointiest toe shape the company has ever created, these shoes exude effortless cool from heel to toetip. A new casuals collection is also on offer, with a selection of laid-back styles ideal for optimal smart-casual dressing.

[www.oliversweeney.com](http://www.oliversweeney.com)  
020 7355 0387

## WEMPE

From the very beginning, Patek Philippe timepieces have elicited spontaneous and enthusiastic acclaim among connoisseurs, all of them lovers of the art of horology. The spirit of innovation has been instrumental for the longevity of its brand. In its current collection, available at the Wempe store, Patek Philippe once more redefines style.

43-44 New Bond Street, W1  
020 7493 2299



## NUMBER ONE

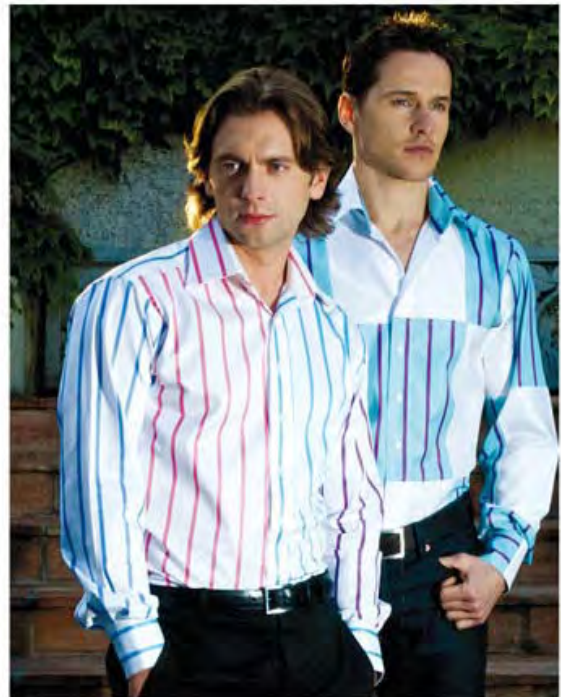
The London Marriott on Grosvenor Square has recently undergone a stunning multi-million pound refurbishment, which includes the creation of 45 luxury club rooms and suites. Fittingly named the 'number one' suites, they feature luxurious four poster beds, fireplaces and marble bathrooms and offer guests access to two of London's finest restaurants, Gordon Ramsay's maze and maze Grill, plus access to special treatments at the hotel's Elizabeth Arden Spa. Grosvenor Square, W1  
020 7493 1232



### ANTHOLOGY

For their autumn/winter collection Links of London has created 'Anthology': a collection inspired by the spirit of discovery. Drawing widely on the world – from East to West, from culture and nature – 'Anthology' plunders a well of references. The standout piece is the diamond capsule pendant, a reinterpretation of the traditional Japanese inro. Both objet d'art and secret chamber. Mix and match with these stunning turquoise stiletto earrings.

32 Brook Street, W1  
020 7499 7909



### DRESS TO IMPRESS

Grosvenor has been building its sterling reputation as a shirtmaker par excellence for years, which is great news for the discerning dresser. Their autumn/winter collection of ready-to-wear and made-to-measure shirts comes with the assurance of flawless craftsmanship and use of the world's finest luxury cloth. If you're looking to make that sartorial splash, then Grosvenor shirts are the only shirts you will need.

4 Grosvenor Street, W1  
020 7629 2782

### HOME FROM HOME

Enjoy all the rewards of owning a second home without any of the burdensome responsibilities. Sound appealing? Botiga offers exclusive co-ownership and access to a range of stunning properties from St. Moritz to Marrakech. This definitive private retreats club service also includes your own personal assistant, who will be on hand to furnish your ultimate getaway just to your taste - from supplying the books you read to serving your favourite wine and cuisine.

For more go to:  
[www.botiga.co.uk](http://www.botiga.co.uk)



### FANTASIE

With each piece a miniature work of art, 'Fantasie' is a new range of jewellery designed by award-winning Wendy Yue and launched by PASCAL. Our current favourite from the collection is 'Gecko' (below left) – a diamond set pavillion perched on gnarled ebony, complete with diamond-encrusted geckos. The wit of each design means that every ring is destined to be a dinner party conversation piece.

Available at Harrods,  
87-135 Brompton Road, SW1  
020 7730 1234

### PURE THERAPY

Travel in style with the luxurious Taer Icelandic Essential Travel Set. Containing carefully selected Taer Icelandic products, this chic re-useable wash bag will help maintain your complete skincare regime while on the move. 'Taer' is Icelandic for 'pure', and this sophisticated range of products, with its unique blend of organic Icelandic herbs, essential oils, vitamins and minerals will work to purify and nourish your skin whenever and wherever you travel.

Available to buy from [www.taer.com](http://www.taer.com)

